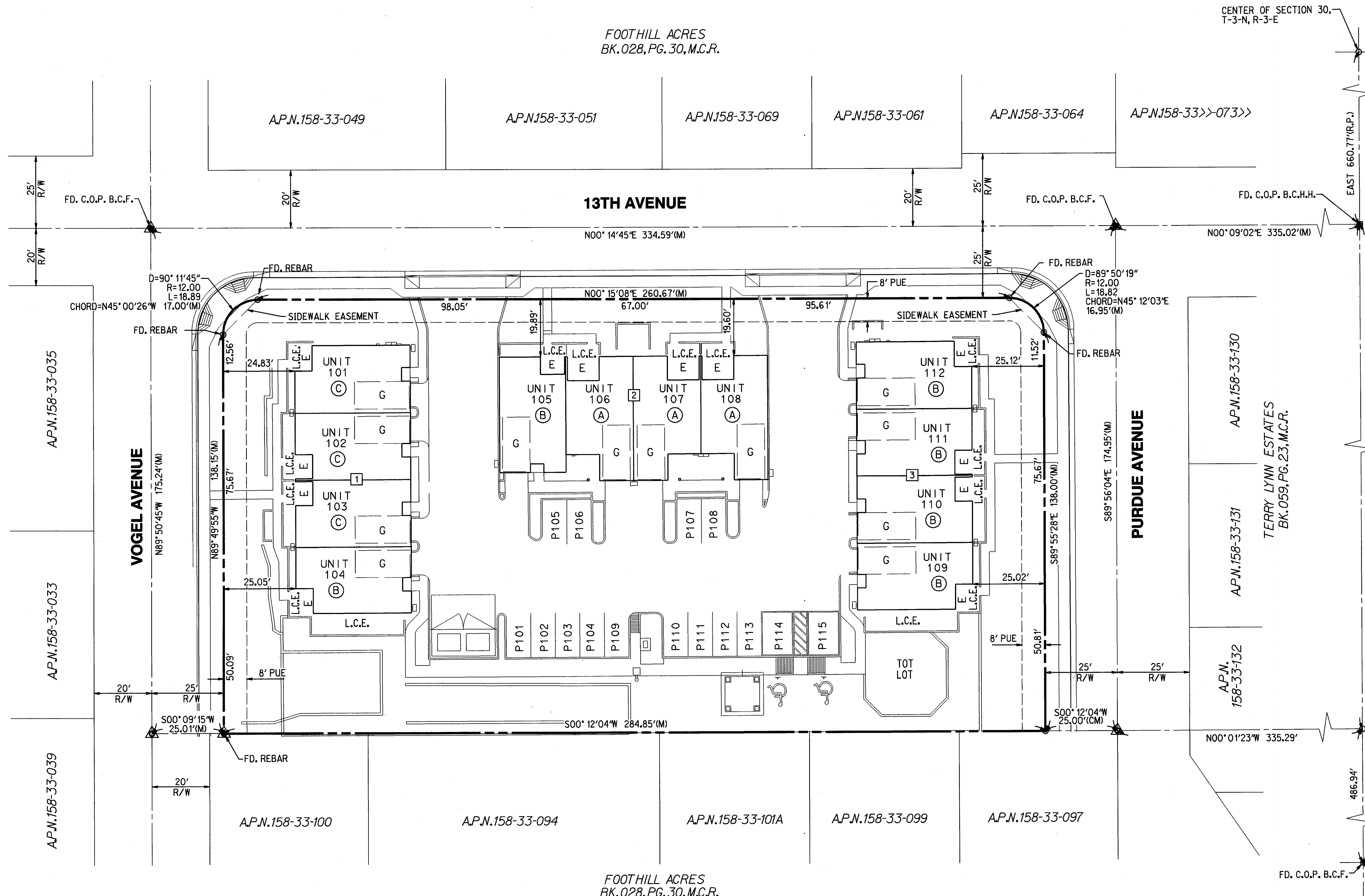


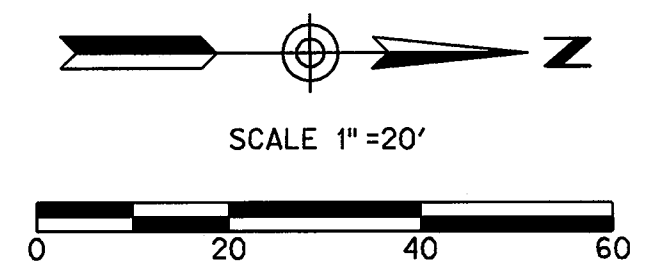
FOOTHILL ACRES  
BK.028, PG.30, M.C.R.



**LEGEND**

- INDICATES PROPERTY BOUNDARY
- - - INDICATES SECTION LINE
- - - INDICATES EASEMENT LINE
- [2] INDICATES BUILDING TYPE
- (A) INDICATES UNIT TYPE
- UNIT 101 INDICATES UNIT NUMBER
- P101 INDICATES PARKING SPACE NUMBER
- B.C.F. INDICATES BRASS CAP FLUSH
- B.C.H.H. INDICATES BRASS CAP IN HANDHOLE
- M.C.R. INDICATES MARICOPA COUNTY RECORDER
- C.O.P. INDICATES CITY OF PHOENIX
- L.C.E. INDICATES LIMITED COMMON ELEMENT
- R/W INDICATES RIGHT-OF-WAY
- FD. INDICATES FOUND
- (R.P.) INDICATES RECORDED PLAT, BK. 28 OF MAPS, PG. 30.
- PUE INDICATES PUBLIC UTILITY EASEMENT
- (R) INDICATES RECORDED DATA
- (M) INDICATES MEASURED DATA
- G INDICATES GARAGE
- E INDICATES ENTRYWAY
- INDICATES PROPERTY CORNER
- INDICATES SECTION CORNER

BOOK 975 PAGE 30  
OFFICIAL RECORDS OF  
MARICOPA COUNTY RECORDER  
HELEN PURCELL  
2008 - 0179312  
02/29/2008 09:01 AM



"VOGEL CONDOMINIUMS"

*Handwritten signature*  
2/27/08  
Professional Engineer Seal for Steven C. Burford, State of Arizona, License No. 26409.

**SITE PLAN**

SHEET 2 OF 4

 RICK ENGINEERING COMPANY PHOENIX, AZ 85016 602.957.3350 (FAX) 602.285.2396 rickengineering.com	6150 NORTH 16TH STREET PHOENIX, AZ 85016 602.957.3350 (FAX) 602.285.2396
	PROJECT NO. 3361A
DATE: FEB 2008	DRAWN BY: CO